

1 690 000 €

Buying apartment

2 rooms

Surface : 80 m²

Surface of the living : 33 m²

Year of construction : 1972

Exposition : Sud ouest

View : Mer panoramique

Hot water : Collective

Inner condition : a refresh

Standing : residential

Building condition : good

Features :

lift, park, gated, calm, armored door,
residential, Arrosage automatique, Gardien

1 bedroom

1 terrace

1 bathroom

1 WC

1 garage

1 cellar

Energy class (dpe) : Unavailable

Emission of greenhouse gases (ges) :

Unavailable

Document non contractuel

27/04/2024 - Prix T.T.C



Apartment 23- Villefranche-sur-Mer

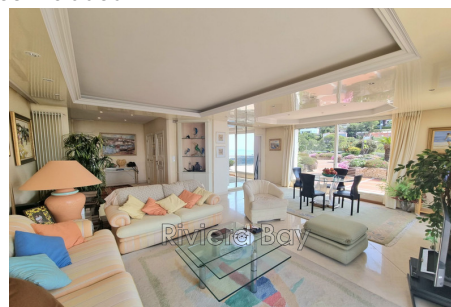
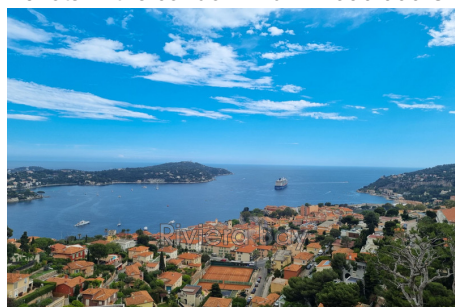
VILLEFRANCHE SUR MER - CORNE D'OR - ROOFTOP TERRACE 286m²
EXCEPTIONAL PANORAMIC SEA VIEW - QUIET - GARAGE Rare product! In the heart of a popular and secure residence, 2/3 room roof terrace apartment with 286m² terrace, quiet, not overlooked, with a dominant sea view. Entrance with storage, guest toilet Spacious and bright living/dining room with large bay windows to enjoy the breathtaking view of the Cap de St Jean Cap Ferrat Independent fitted kitchen with access to the terrace Bedroom en suite with bathroom/shower opening onto the terrace and sea view. Very large terrace with flowers and trees with Mediterranean species with summer kitchen and covered area of 45m² for a future relaxation area jacuzzi / gym. (possibility of making this space habitable with a negotiation with the condominium) Automatic watering, automated roller shutters Garage in the basement, direct elevator access, with automatic door. Cellar

Fees and charges :

Annual current expenses 5 712 €

Well condominium

43 lots in the condominium 1 690 000 € fees included



RIVIERA BAY - 4 Bd de la Corne d'Or (Moyenne Corniche) - 06230 Villefranche-sur-Mer
Parking Gratuit devant l'agence / Free Parking Lots available

Tél. +33 (0)4 93 04 22 12 - contact@riviera-bay.com - www.riviera-bay.com

RCS Nice B 491 891 594 - Document non contractuel - Barème de prix sur notre site internet