

379 000 €

Buying apartment

Surface : 57 m<sup>2</sup>

Features :

lift, calm, Gardien

1 bedroom

1 terrace

1 bathroom

1 WC

1 garage

1 cellar

Energy class (dpe) : C

Emission of greenhouse gases (ges) :

Unavailable



### Apartment Nice

NICE MONT ALBAN - TERRACE AND GARDEN - RESIDENTIAL - SEA VIEW - GARAGE In a very popular and residential area, close to all amenities, beautiful 2 room apartment of 57m<sup>2</sup> opening onto terrace and garden with sea view, south west orientation. Apartment with living room, fitted and equipped kitchen (possibility of removing the partial partition) direct access to the terrace. Bedroom, bathroom and toilet. Closed garage in the basement Cellar

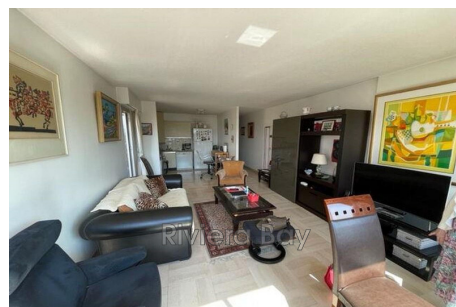
Fees and charges :

Well condominium

379 000 € fees included

Document non contractuel

20/09/2024 - Prix T.T.C



RIVIERA BAY - 4 Bd de la Corne d'Or (Moyenne Corniche) - 06230 Villefranche-sur-Mer

***Parking Gratuit devant l'agence / Free Parking Lots available***

Tél. +33 (0)4 93 04 22 12 - contact@riviera-bay.com - www.riviera-bay.com

RCS Nice B 491 891 594 - Document non contractuel - Barème de prix sur notre site internet