

1 600 000 €

**Buying apartment**

**5 rooms**

**Surface : 118 m<sup>2</sup>**

**Exposition : Sud est**

**View : Mer panoramique**

**Hot water : Individuelle électrique**

**Inner condition : excellent**

**Standing : residential**

**Features :**

lift, park, gated, calm, armored door,

Jardin, air conditioning, Gardien, Accès

direct plage, Espace Douche ext

3 bedroom

1 terrace

1 bathroom

1 shower

2 WC

1 cellar

**Energy class (dpe) : C**

**Emission of greenhouse gases (ges) : C**

Document non contractuel

14/12/2024 - Prix T.T.C



Riviera Bay

### Apartment -23 Eze

**EZE SUR MER - WATERFRONT - LARGE TERRACE** In the SILVA MARIS residence, located on the Port of Eze-Sur-Mer, magnificent furnished 3-room apartment located on the ground floor with a large terrace and a private garden. This exceptional apartment benefits from direct and private access to the beach, Large living room opening onto the terrace, independent fitted kitchen opening onto the terrace, master bedroom opening onto the terrace, mahogany "boat cabin" bedroom and private toilet, office, dressing room, and spacious bathroom. The beautiful amenities of the apartment and its dream location are exceptional. Many possibilities to park vehicles in the residence. Information on the risks to which this property is exposed is available on the Georisques website:

[www.georisques.gouv.fr](http://www.georisques.gouv.fr)

Fees and charges :

Annual current expenses 6 000 €

Well condominium

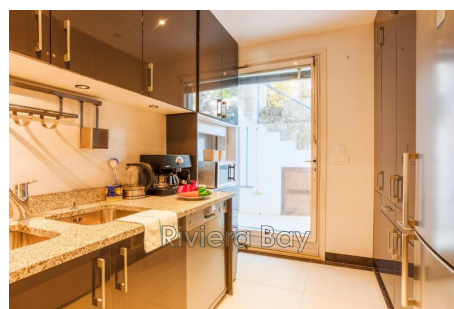
67 lots in the condominium 1 600 000 € fees included



Riviera Bay



Riviera Bay



Riviera Bay

**RIVIERA BAY - 4 Bd de la Corne d'Or (Moyenne Corniche) - 06230 Villefranche-sur-Mer**  
***Parking Gratuit devant l'agence / Free Parking Lots available***

Tél. +33 (0)4 93 04 22 12 - [contact@riviera-bay.com](mailto:contact@riviera-bay.com) - [www.riviera-bay.com](http://www.riviera-bay.com)

RCS Nice B 491 891 594 - Document non contractuel - Barème de prix sur notre site internet